



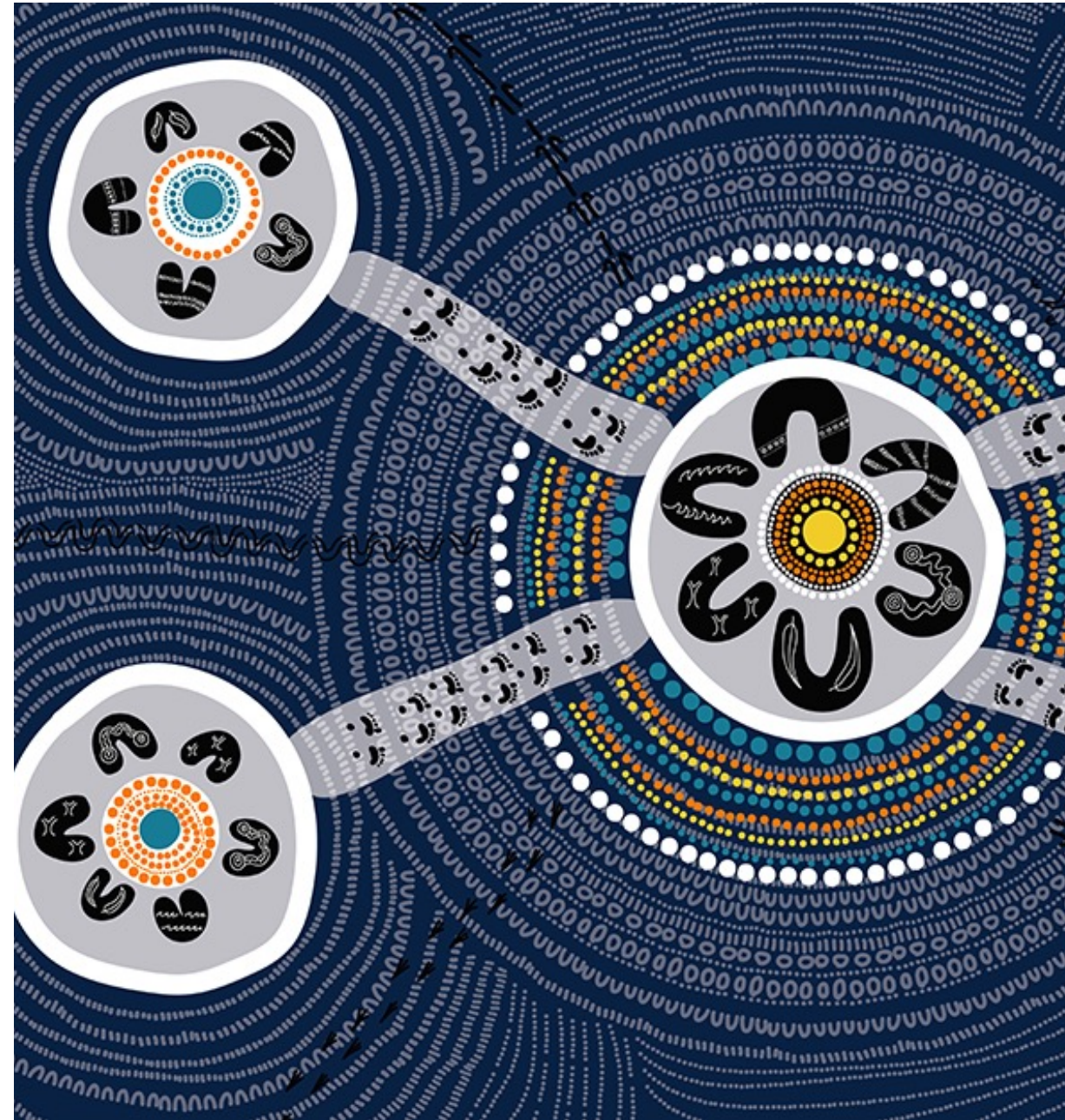
||

Suppliers in the Spotlight

25 July 2024

Acknowledgement of Country

The Infrastructure Sustainability Council would like to begin by acknowledging the Traditional Custodians of the land on which we meet today. I acknowledge their deep connection to land, water and culture, and pay my respects to their Elders past and present.



Agenda



1

Scott Losee



2

Ben Hough



3

Mariana Perez



4

Nils Barry



5

Adrian Cahill



6

Adam Ferguson





Losee Consulting

Scott Losee, Director





Knowledge, capability, values

scott@loseeconsulting.com.au

25 July 2024

Coming to you
from Meanjin

Traditional
lands of
Turrbal and
Yaggera

Respect.

Artist: Arnold Conway





Losee Consulting services for infrastructure

- Friendly team of 8 sustainability professionals keen to help you:
 - Complement or supercharge your project delivery
 - Navigate complex IS ratings with confidence you'll achieve your targets
 - Build value for your clients and communities while maximising IS rating outcomes
- We're known for successfully helping contractors, designers and asset owners with:
 - All aspects of rating submissions
 - Modelling energy, water and materials
 - Climate risk and resilience
 - Auditing, reviewing and coaching
 - Strategic advice



We have our fingers on the pulse



We have capability to collaborate



We stick to our values and add value



Our fingers on the pulse

- We have the latest training
- Highly connected to ISC
- Innovation from seeing many contexts
- We see best practice
- Road, rail, dams, pipelines, powerlines
- Work across asset owners, contractors and designers





Our fingers on the pulse

- Fresh ideas for your project
- Avoid re-work, sidestep pitfalls
- Use our experience to manage rating outcome risk effectively
- Specify, design and deliver sustainability with greater confidence





Example

Scott and verification

- IS Verifier for 70 projects
- First ever verification
- First 2.1 verification
- Some of the highest CAPEX projects in Australia
- All states + NZ
- Diverse infrastructure and rating types



Credit Summary Form

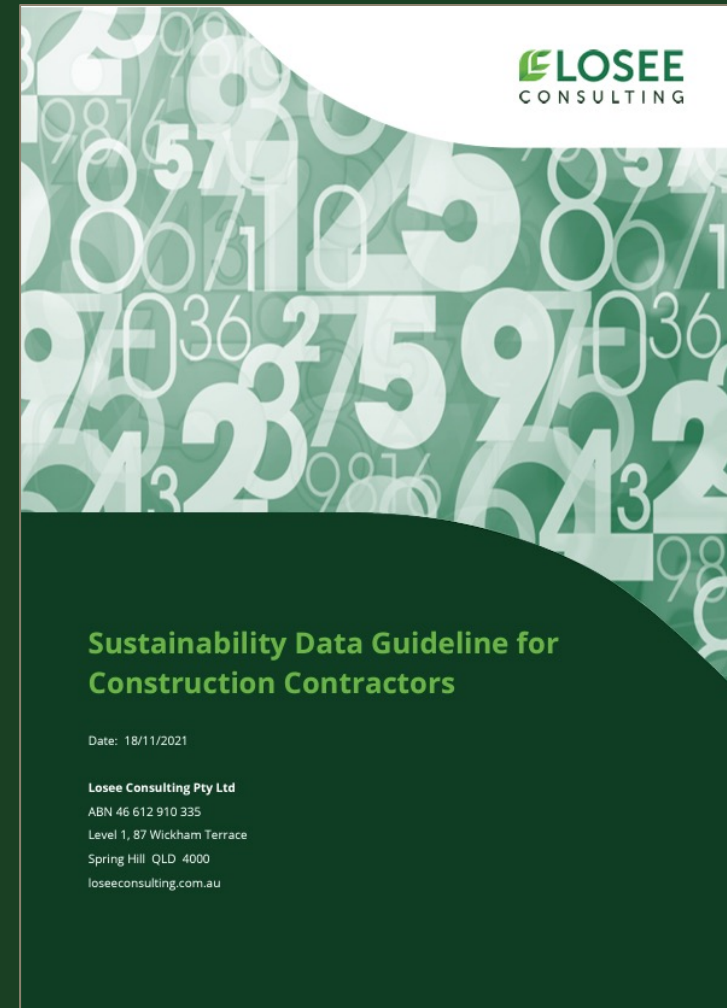
Mat-1 Materials Lifecycle Impact
Measurement and Reduction





We have capability to collaborate

- Critical mass of ISAPs
- Dovetail with your project delivery
- We love collaborating
- Communicate so all can understand
- Upskill your team
- Problem-solve across boundaries





We have capability to collaborate

- Save money by getting the expertise you need only when you need it
- Keep on schedule during intense periods
 - Tenders, mobilisation and rating submission
- Boost productivity using our depth to bolster on-project sustainability teams
- Avoid re-inventing the wheel by plugging-in our tools and resources
- Reduce reliance on costly consultants for future projects





Example

- Client-side advisors for CRR since 2018
- Tender evaluation
- Program level credits
- Innovation development
- Credit reviews
- Support CRR Delivery Authority with managing contractors
- Now helping with Gold Coast stations

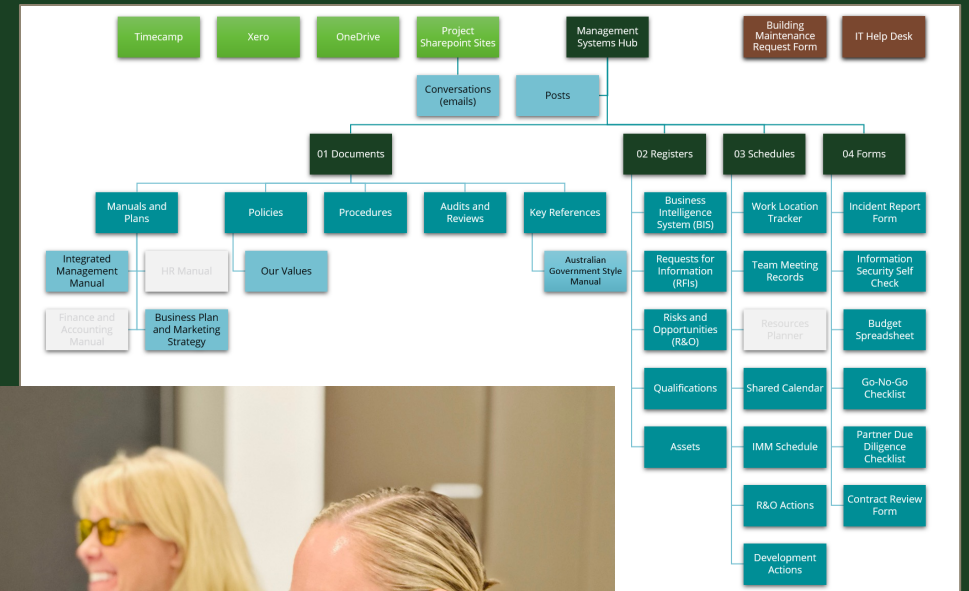




We stick to our values and add value



- Operating > 10 years
- Established, secure, robust company
- Senior professionals
- Direct employees
- Driven by 6 core business values
- Client needs and value for money
- Sophisticated management systems





We stick to our values and add value



- Predictable budgeting
- Stick by you to the end of lengthy and challenging projects
- Our industry reputation smooths stakeholder interactions
- Satisfy your HSEQ requirements
- Be confident in our mature interaction with your clients and stakeholders



Our values



Leading by example



Truthfulness



Fair dealing



Purpose in our work



Kindness and empathy



Absence of errors



Fingers on the pulse



Capability to collaborate



Stick to our values and add value



How can we help?

Scott Losee

scott@loseeconsulting.com.au

0404 467 228



Vital Chemical

Ben Hough, Chief Commercial Officer





**VC Vital
Chemical**

ABratnicki



Infrastructure
Sustainability
Council

MEMBER



ISupply

MEMBER



Vital Super Clear



Vital Bon-Matt
P47-VR1



Vital Bon-Matt HR



Vital Flo-Chem Thick with
Rust Guard



Vital Bon-Matt Stonewall



VE Gro-Matt Hydromulch

VE Gro-Matt Hydromulch

Application Site: Western Sydney Airport (NSW)



VE Gro-Matt

ISupply Applicable Credits

- | | | |
|-------------------|------------------------------------|---|
| WAT-1
ISv2.1 | Avoiding water use | <ul style="list-style-type: none">• The heat treated wood fibres provide increased water holding capacity, significantly reducing water consumption |
| WAT-1
(ISc1.2) | Water use monitoring and reduction | <ul style="list-style-type: none">• Holds up to 15 times its weight in water, significantly reduces water consumption |
| DIS-1
(ISv1.2) | Receiving water quality | <ul style="list-style-type: none">• Can be applied hydraulically to otherwise inaccessible areas and provides faster vegetation growth than traditional seeding methods• Possesses unique moisture holding capacity to mitigate erosion and sediment impacts |



VE Gro-Matt Hydromulch

Bruce Highway Upgrade – Caloundra Road to Sunshine Motorway (QLD)





vitalindustries.com.au

Ben Hough

✉ enquiries@vitalindustries.com.au

☎ 1800 2 VITAL



One Click LCA

Mariana Perez, Business Developer



DECARBONIZING CONSTRUCTION & MANUFACTURING WITH ONE CLICK LCA



Mariana Perez Iacono
Business Developer Australia & New
Zealand
mariana.perez@oneclicklca.com
+61 0437 486 994

57% global carbon emissions from construction & manufacturing



1 Gt CO₂ / annum
Construction process & transport



2 Gt CO₂ / annum
Plastics & other manufacturing



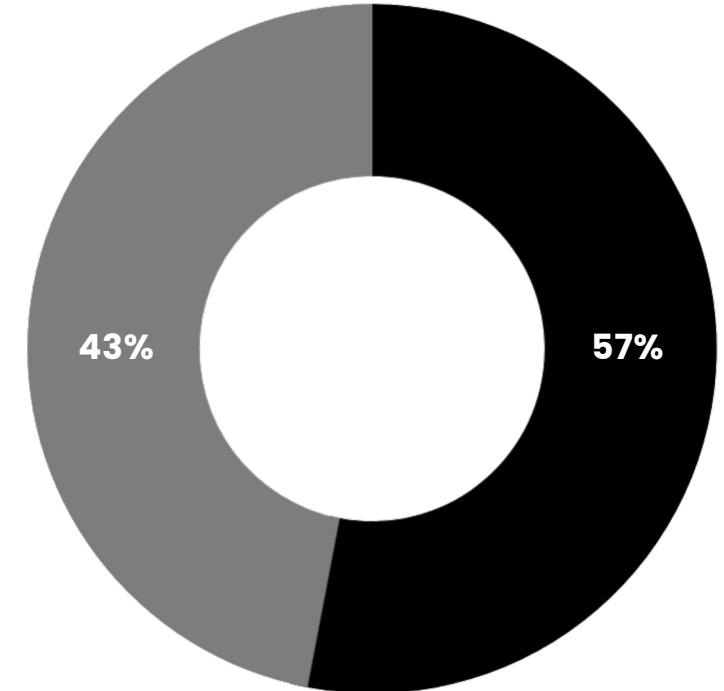
4 Gt CO₂ / annum
Cement



5 Gt CO₂ / annum
Metal manufacturing



9 Gt CO₂ / annum
Energy use in buildings



Other sources of carbon emissions



Construction and manufacturing carbon emissions

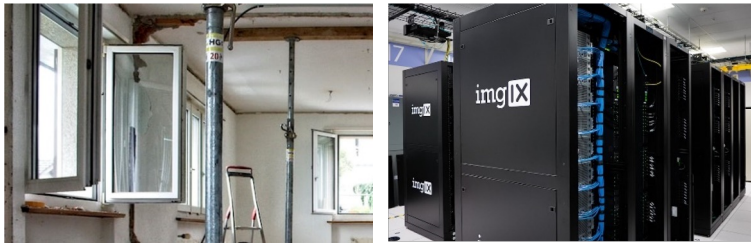
Leading LCA software for construction & manufacturing



End-to-end sustainability platform for the industry

BUILDINGS

All project types, including data centers & MEP



INFRASTRUCTURE

Civil, transport and special infrastructure projects



MANUFACTURING

Heavy & advanced manufacturing & assembly



Unique global data and tools to get job done, from A to Z

ALL DATA GLOBALLY

All the worlds EPDs curated & lots of industry data



GLOBAL COMPLIANCE

For construction & manufacturing LCA & EPD



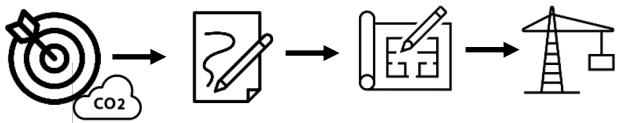
AUTOMATED & INTEGRATED

20 integrations, ready to go reporting & analysis



COVERS ALL PROJECT PHASES

Cooperate with project stakeholders in all phases



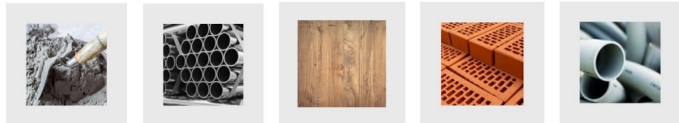
EASY TO USE & LEARN

Intuitive software with great support & training¹

- Overall ★★★★★ 4.6
- Ease of Use ★★★★★ 4.5
- Customer Service ★★★★★ 4.9

AUTOMATED EPD PROCESS

Seamless process from templates to ready EPDs



1) Source: Capterra. Free online training at academy.oneclicklca.com.

Infrastructure Sustainability Council



Applicable Credits

IS v1.2	Inn-1 , Mat-1
IS v2.1	Inn-1 , Rso-6

Mat-1 (ISv1.2)	Calculation tool to help achieving the credit. The calculation includes the life cycle modules of A1-A5 and B2-B4. The results are provided in midpoint LCA indicators as well as in IS EnviroPoints v2.
Rso-6 (ISv2.1)	Calculation tool to help achieving the credit. The calculation includes the life cycle modules of A1-A5 and B2-B4. The results are provided in midpoint LCA indicators as well as in IS EnviroPoints v2.
Inn-1 (ISv1.2)	The use of One Click LCA life-cycle assessment software contributes to Innovation Challenge 8: Sustainable Suppliers and ISupply.
Inn-1 (ISv2.1)	The use of One Click LCA life-cycle assessment software contributes to Innovation Challenge 4: Sustainable Suppliers and ISupply.

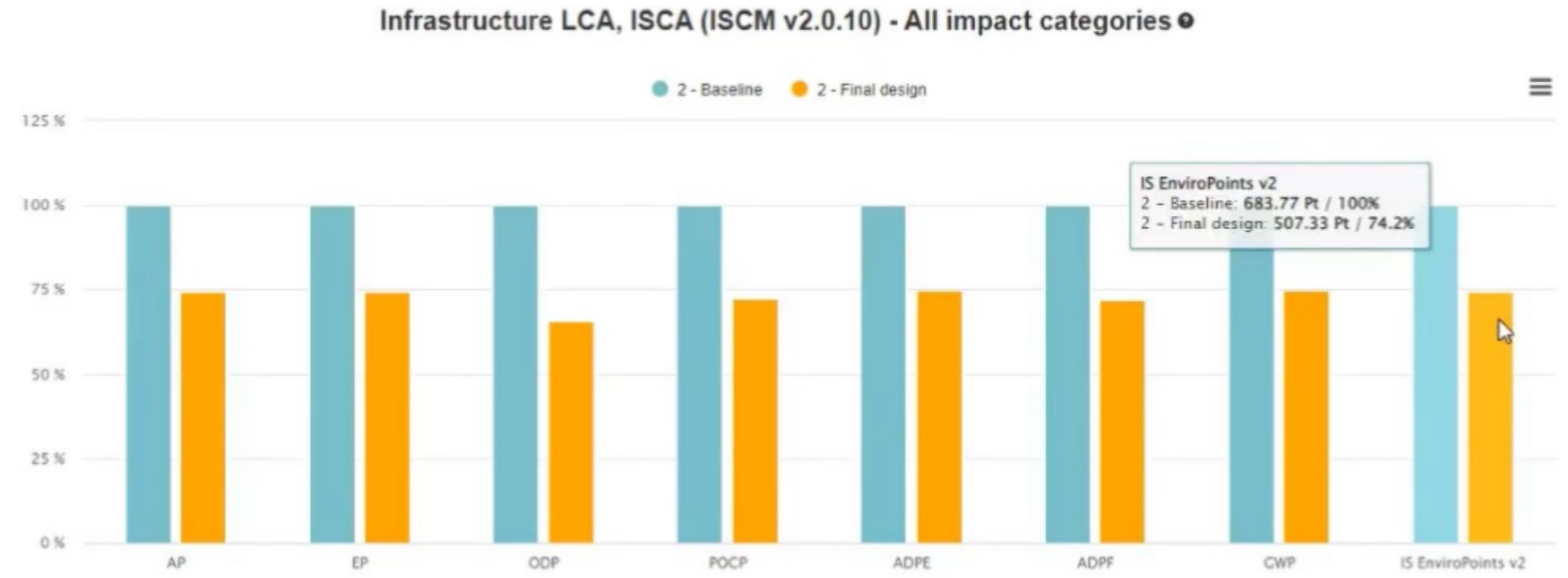


▼ Design phase: 2 designs Parameters + Add a design Compare data Tools

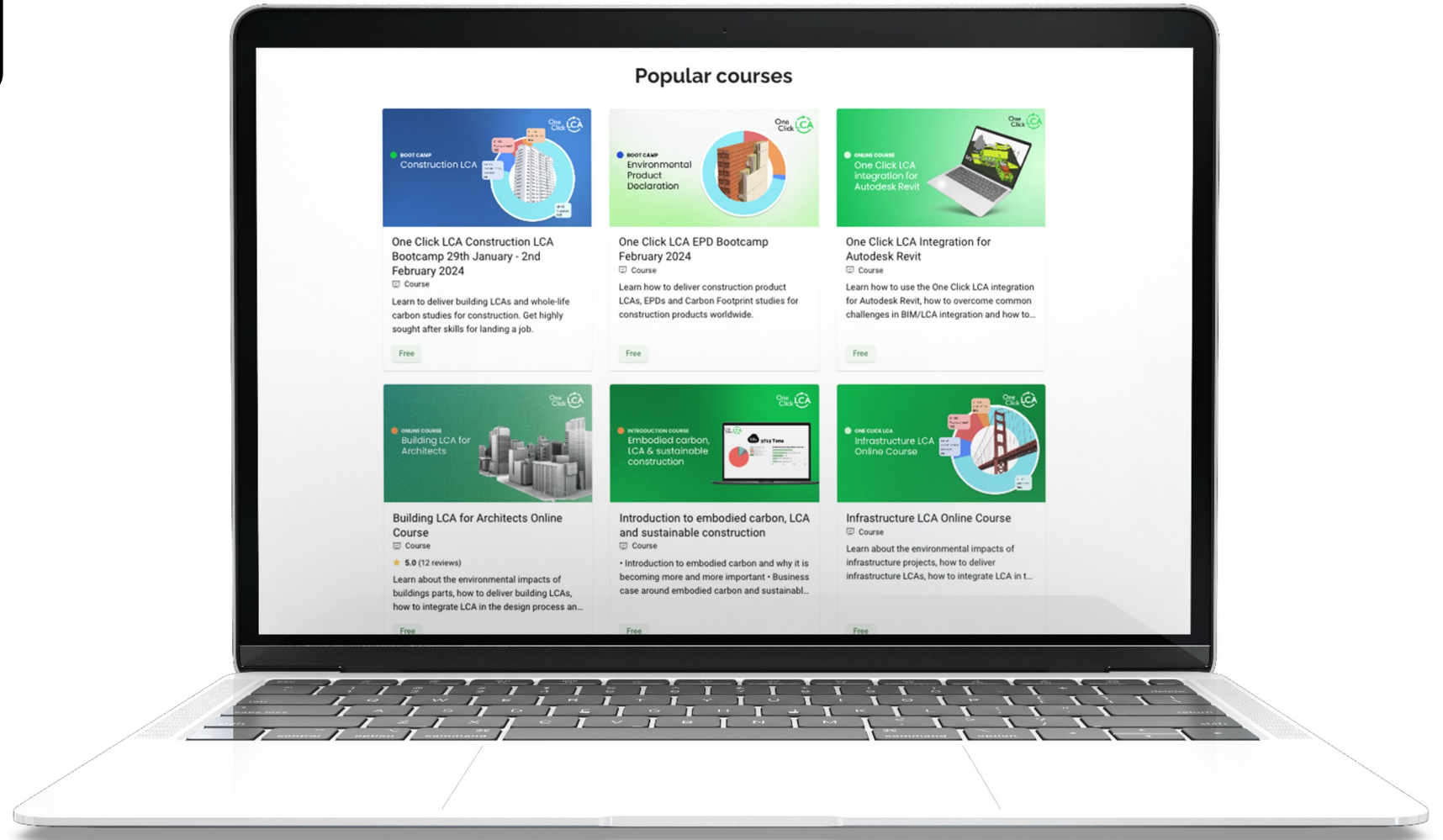
Tool	Unit	2 - Baseline	2 - Final design
Infrastructure LCA, ISCA (ISCM v2.0.10) Help	kg CO ₂ e	78 190	58 310

▼ Graphs - Infrastructure LCA, ISCA (ISCM v2.0.10), Global wa... Showing 2 / 2 designs Classification Change tool and impact category

All impact categories | Life-cycle stages | Elements | Compare elements | Elements and life-cycle stages | All graphs



ACADEMY



One Click LCA Ltd
www.oneclicklca.com

Sales enquiries:
sales@oneclicklca.com

Anything else
hello@oneclicklca.com



Mariana Perez Iacono
Business Developer Australia & New
Zealand
mariana.perez@oneclicklca.com
+61 0437 486 994



Q&A



ASPIRE

Nils Barry, Head of New Business & Partnerships





Nils Barry
**Partnerships & Business
Development Executive**

ASPIRE





ASPIRE: Streamline resource use with our digital matchmaking platform. Connect with parties to turn waste into wealth, save on costs, and cut CO2 emissions. Make circular economy gains a reality with ASPIRE.

- Reduce waste disposal costs
- Create new income streams
- Measure & Manage your scope 3 carbon footprint

With ASPIRE, make every resource count.



Created by CSIRO & Data 61 in 2014, been around for 10 years



Generated revenue of over \$4mil since 2019



Have over 4000+ users



ISO- Verified to measure Co2 Carbon reduction (In accordance with ISO 14044, 14067, 21930) over 320,000 tonnes of Co2



Saved Members over \$3.5mil in savings and earnings



Tracking and Tracing via QR or RFID. Blockchain integrated



The image features a solid teal background. Scattered across the frame are several white, thick, curved lines that form partial circles or arcs. Some of these arcs are accompanied by small, white, rectangular dashes, suggesting a stylized or fragmented circular motif. The overall aesthetic is modern and minimalist.

ASPIRE+

ASPIRE+



Step 1

Create your ecosystem



Step 2

Add transactions



Step 3

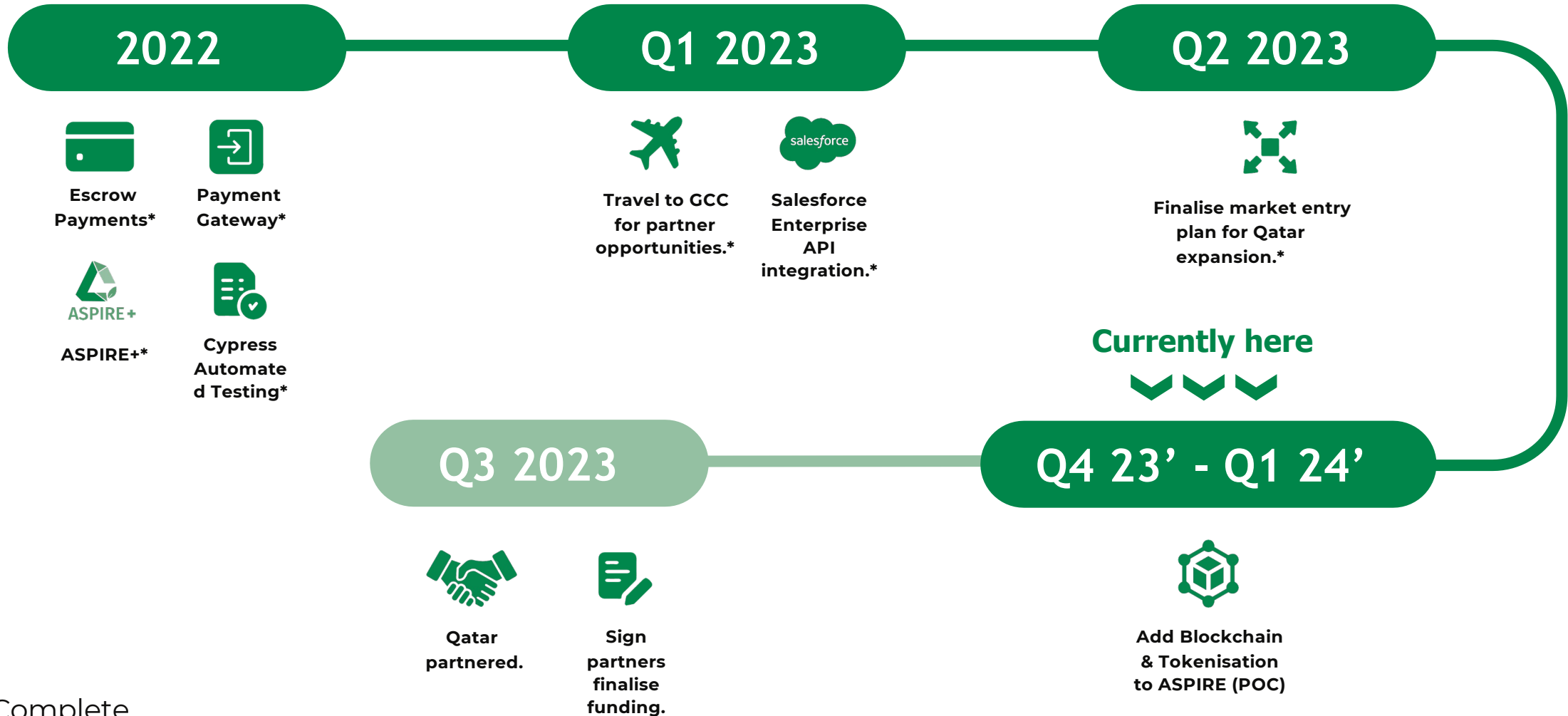
Submit data

How can we help your business?

Get visibility into your Scope 3 emissions and other metrics in under 5 minutes!

- With ASPIRE+, you can calculate your circular economy impact in three easy steps.
- The dashboard offers an accurate baseline of your businesses environmental footprint.
- ASPIRE+ quantifies a user's impact into insightful, ready-to-use data.
- ASPIRE+ can showcase your sustainability commitments to your clients and the public

Technology Development/ Milestones



*Completed

Another successful exchange at ASPIRE!

Join us in creating a sustainable future through collaborative resource exchange!

The resource exchanged:

Repurposed Road Tailings



3,000 t
diverted from landfill



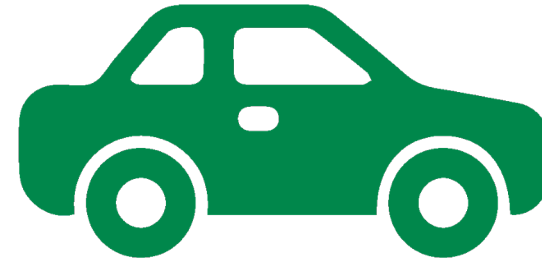
2,400 t
carbon emissions saved



\$81,000
savings

Repurposed Road Tailings

C&D



600 Avg. consumer car off the road for a year equivalent

- removed from road renewal project into stockpile
- used to create road base in aerodrome

Average consumer car taken to be 4 metric tonnes of CO2 per year



ASPIRE Pulse Reporting
4th quarter (30 March- 23 June 2023)



383,531.81
savings



730.9 tonnes
diverted from landfill



115 resources
exchanged



385.25 tonnes
Total emissions saved

Business Case Study

Business/ Organisation Characteristics:

- 1,361 Employees
- 104 Staff onboarded
- 346 Value, Supply Chain & Contractors Onboarded

Current & Past User Pipeline

- **32** Local Governments.
- **3500+** Businesses
- **4000+** Users



THANK YOU!

Nils Barry

**Partnerships & Business
Development Executive**

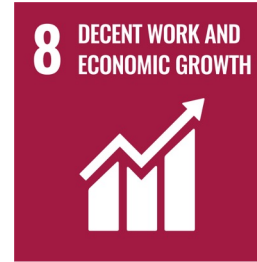
nilsb@aspresme.com

+61 439261289

CONTACT ME HERE



CHECK OUT ASPIRE





RCPA

Adrian Cahill, Technical Manager

RCPA
THE AUSTRALIAN PIPE COMPANY

EKO Pipe Low Carbon Steel Reinforced Concrete Pipes



BX3 MAKES ALL
THE DIFFERENCE...

RCPA **EKO** PIPE

EKO Pipe with BX3 TECHNOLOGY



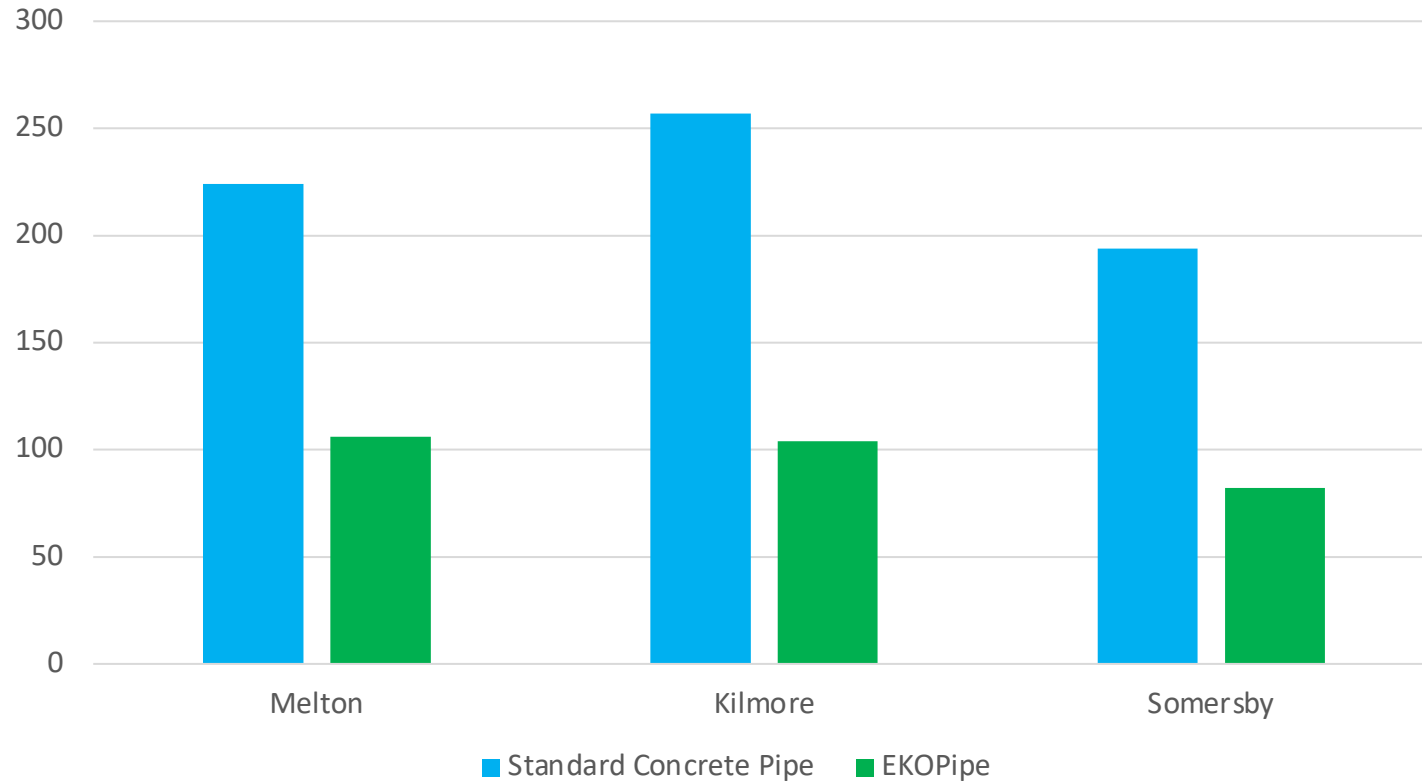
BX3 MAKES ALL THE DIFFERENCE...

RCPA **EKO PIPE**

SUSTAINABILITY

Concrete Emissions (kg CO2e per tonne)

*>80%
reduction in
Portland
cement*



*>50%
reduction in
concrete
CO2e*

BX3 MAKES ALL THE DIFFERENCE...

RCPA **EKO** PIPE

EKO Pipe with BX3 TECHNOLOGY



BX3 MAKES ALL
THE DIFFERENCE...

RCPA **EKO** PIPE

Addressing the problem head on - Portland Cement, used to bind concrete, is energy intensive and contributes 8% of global CO₂ emissions. With over a decade of research and development, EKOPIPE, utilising our revolutionary new **BX3** technology, is here to change the future of our built and natural environment.

80%

**REDUCTION
IN PORTLAND
CEMENT USE***

>50%

**REDUCTION
IN CONCRETE
CO₂ EMISSIONS#**

>

**EXCEEDS THE 2030
COMMONWEALTH
EMISSIONS TARGETS**

=

**EQUAL STRENGTH,
DURABILITY, AND
SERVICE LIFE**



**LET'S
ADDRESS THE
ELEPHANT IN
THE ROOM
TOGETHER!**

*Compared to Standard SRC Pipe
#Actual reduction in concrete pipe CO₂ emissions is determined by the pipe design

BX3 **MAKES ALL
THE DIFFERENCE...**

RCPA **EKO** PIPE



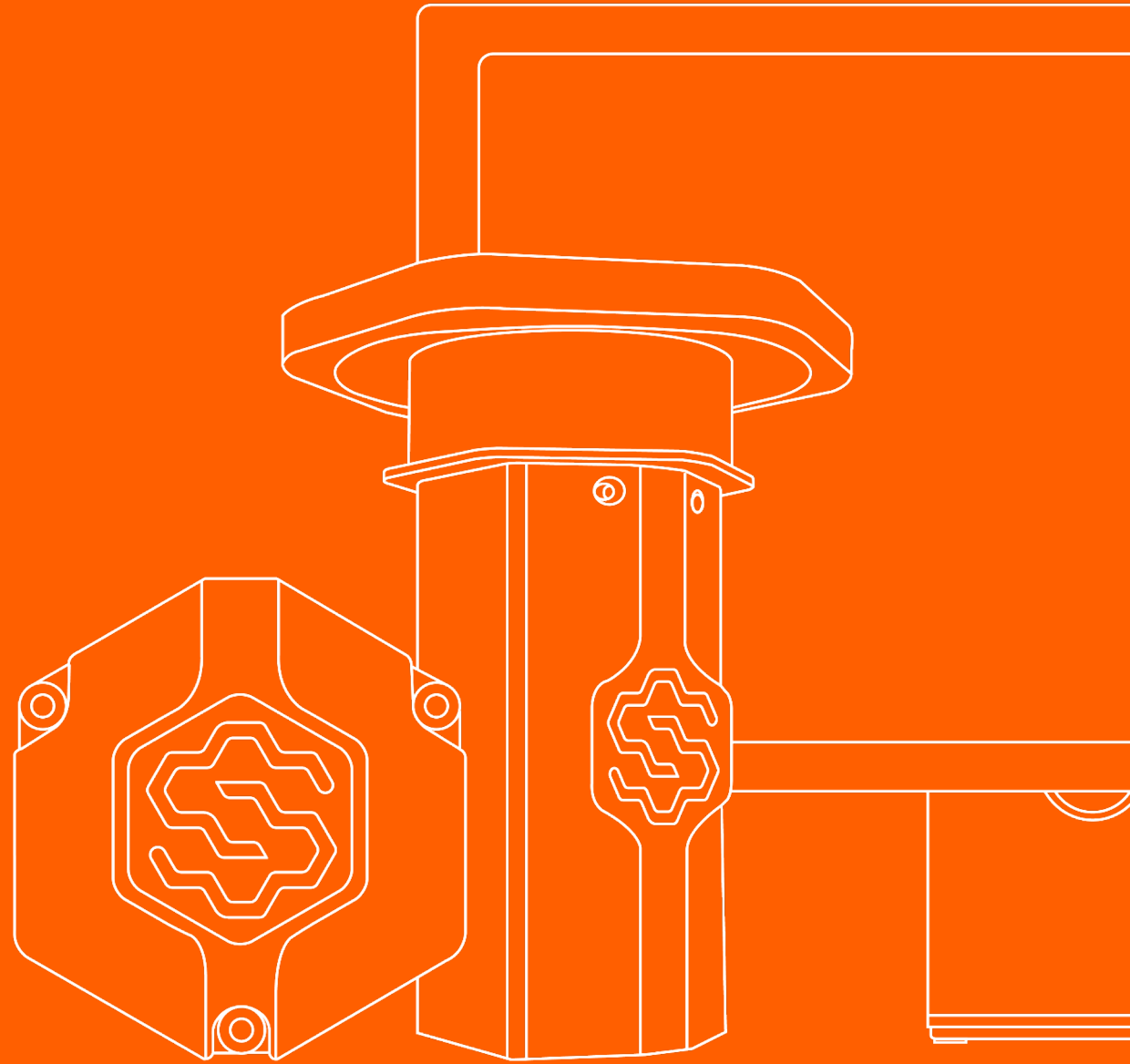
SiteHive

Adam Ferguson, Co-Founder



SiteHive

Environmental management
for today's world



June 2024

SiteHive Hexanodes

Innovative environmental monitoring devices

The award-winning SiteHive Hexanode family of devices provide continuous real-time data, as well as rich contextual information including images, audio and direction of arrival.

They have been designed for the rigours of construction, and are easy to set up on site: simply plug and play.



Hexanode Multi

All in one multi sensor Hexanode, noise, dust, images & audio.



Hexanode Noise

Smaller, more compact, lower power, for noise, images & audio.



Hexanode Vibration

Robust and compact, for structural and human comfort vibration.



SiteHive Enviro

The information you need, at your fingertips

SiteHive Enviro software brings all your environmental data into one place, so you can make quick and confident decisions based on real-time data.

Graphical presentations make it easy and intuitive to use, while industry-specific workflows save time at every step.

SiteHive Enviro is an open, cloud-based ecosystem - it takes data from any source and can be accessed from anywhere.



Dust



Noise



Vibration



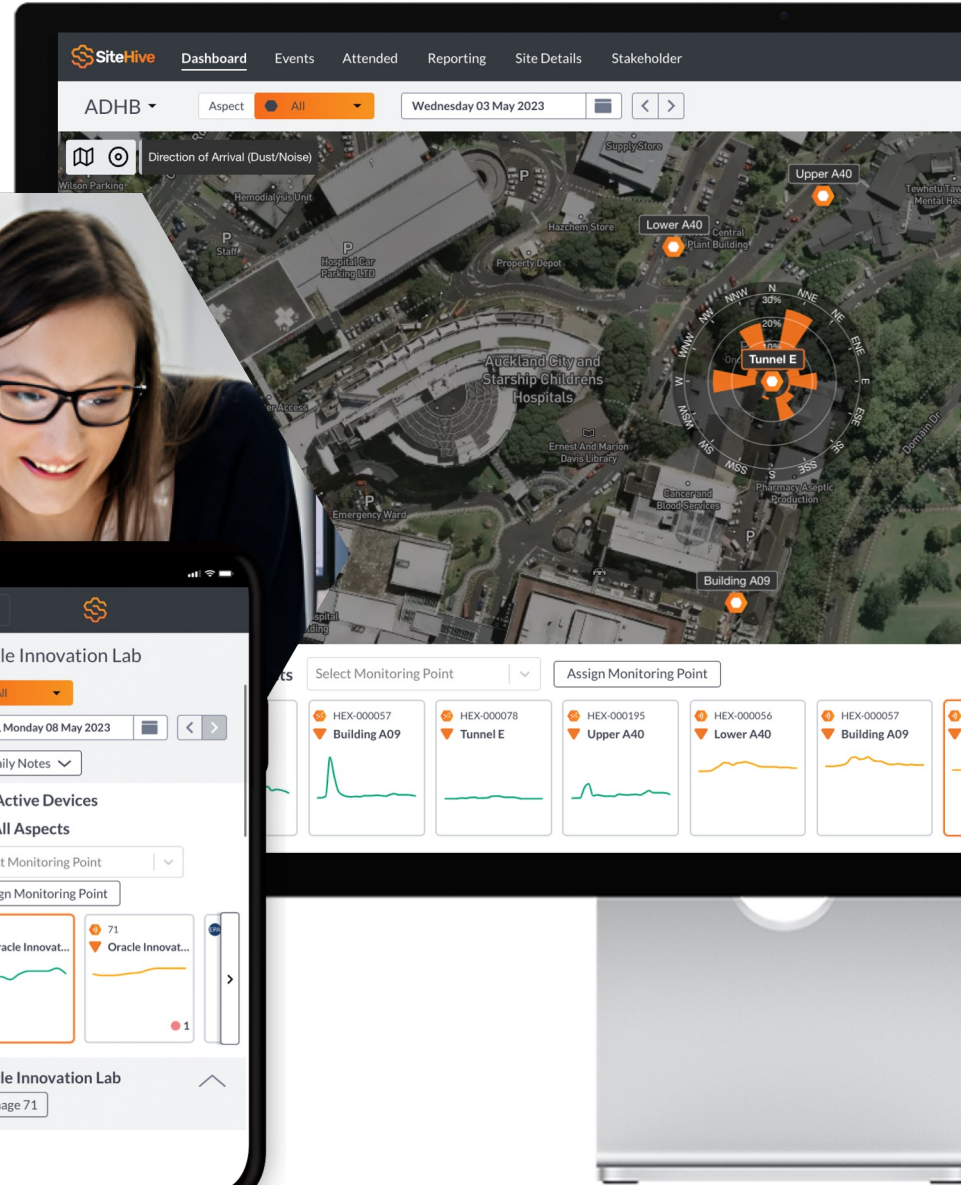
Media



Water



Weather



Eyes and ears across your site

Noise exceedances trigger image capture, audio recordings and automatic AI audio classification.

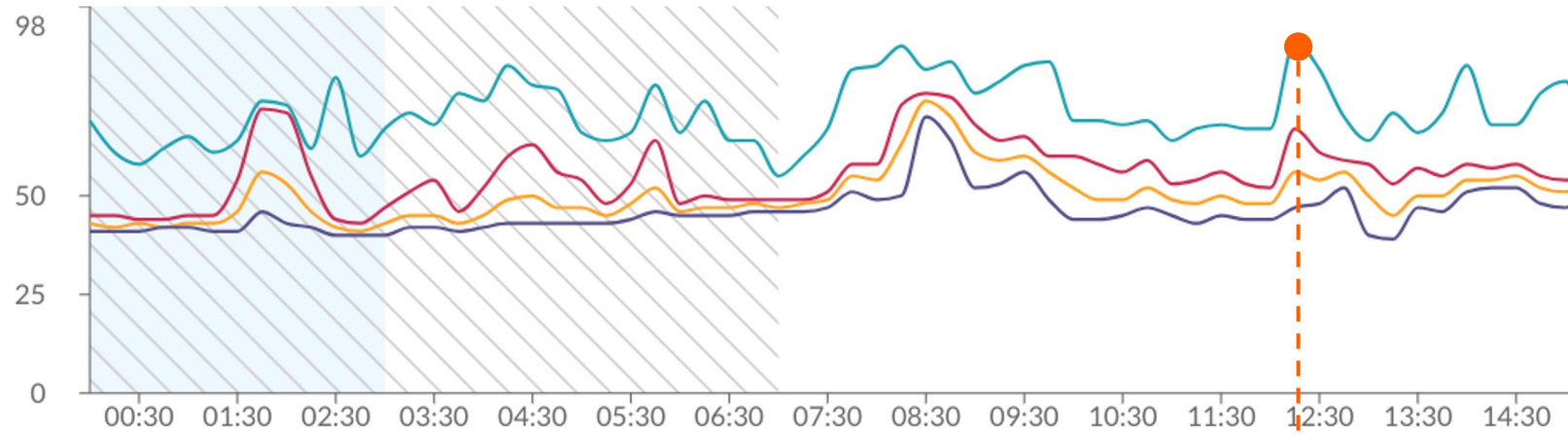


Noise



Media

dB Sound Levels 15 min averages



14:03 79dB 71% Construction Heavy Plant Oper 	14:18 83dB 92% Construction Item Dropping 	14:33 75dB 82% Human Activity 	14:48 74% Constr

SiteHive in action

Trusted by over 250 projects in multiple industries

“Using SiteHive has been a huge time saving. With SiteHive we can now see the site in real time. We know if there’s an issue and we can investigate it and address it immediately.”

Claire McPherson, CPB Contractors, Western Sydney Airport



**JOHN
HOLLAND**

**MCCONNELL
DOWELL**

Built.

LAING O'ROURKE

**CPB
CONTRACTORS**

**Fulton
Hogan**

**GAMUDA
Australia**

MULTIPLEX

WINSLOW



Q&A



Thank You